

What is SSAFE?



Senior Stewards Acting for the Environment (SSAFE)

SSAFE is a Kendal-inspired network of elder communities in action on the path to net-zero emissions. SSAFE is unique – no other elder climate organization is structured around senior living communities. Started in 2020, SSAFE is now a non-profit 501(c)(3) organization. Because SSAFE is a cross-campus initiative, all national meetings take place online over Zoom.

Membership:

Any Kendal or Kendal affiliate resident may sign-up for free SSAFE membership. Go to [SSAFE.org](https://ssafe.org), click the blue button "Join SSAFE Today", and fill out the appropriate form. Or, email info@ssafe.org and ask to register.

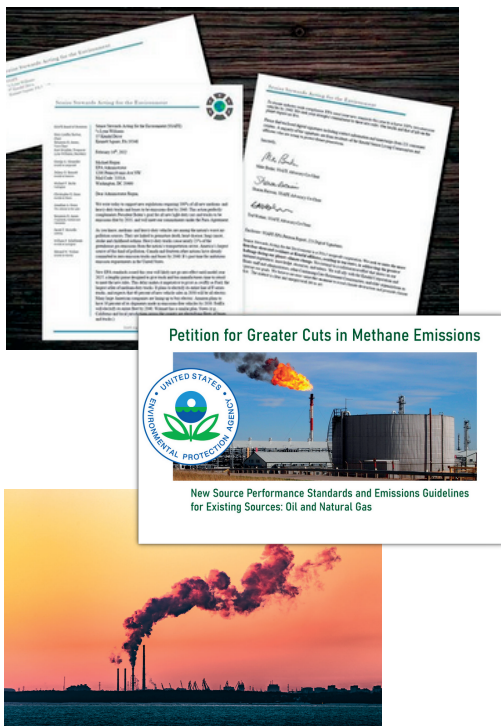
What is included with SSAFE Membership?

As soon as you register to become a SSAFE member, you will receive:

1. Occasional SSAFE Advocacy Action Alerts: Sign a petition or email a letter to elected officials and policy makers about key climate legislation.
2. Quarterly SSAFE Newsletter notices (free access through the SSAFE website).
3. An invitation to the monthly General Committee meeting held on the first Thursday of the month.

What are some examples of SSAFE activities?

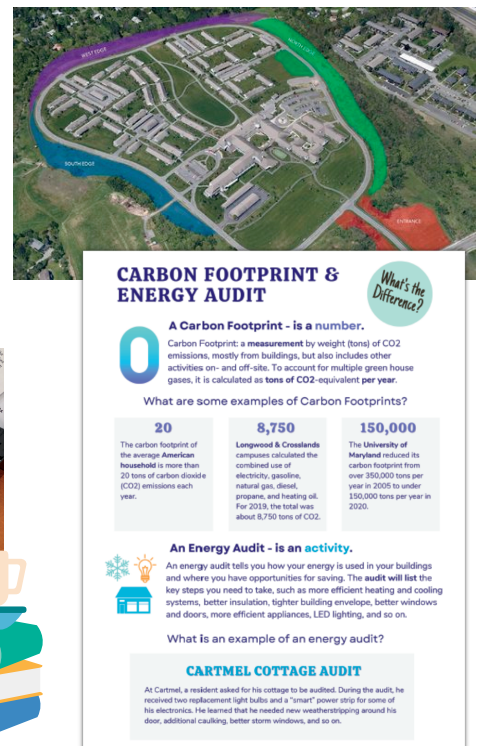
Advocating for the Climate



Inspiring Action



Residents Making a Difference!



Interested in learning more? Visit [SSAFE.org](https://ssafe.org) online or email us at info@ssafe.org

Senior Stewards Acting for the Environment (SSAFE) Structure

SSAFE Board of Directors

The SSAFE Board of Directors is comprised of one resident representative from each Kendal affiliate or associated community as follows: The Admiral, Cartmel, Collington, Coniston, Crosslands, Hanover, Ithaca, Lathrop, Lexington, Longwood, Oberlin. Not all Kendal communities are represented by a resident Board member. If you do not see your community and are interested in participating, please email info@ssafe.org.

SSAFE General Committee

Any Kendal or Kendal affiliate resident who has registered on SSAFE.org is considered a SSAFE member and part of the SSAFE General Committee. Any SSAFE member may attend the monthly General Committee meeting to listen to presentations and share ideas.

SSAFE Project Teams

SSAFE Members may request to participate in any of the three focus areas known as SSAFE Project Teams. The project teams meet monthly to discuss specific actions based on SSAFE's mission and goals. SSAFE project teams present useful information and encourage members to share ideas to spread across all campuses advancing and amplifying SSAFE's mission and goals.

Advocacy Project Team

- SSAFE Action Alerts for climate policy/legislation
- Petitions
- Letter campaigns
- State & local advocacy
- Divestment Actions

Education Project Team

- Inspirational messaging
- Newsletter
- Climate Café discussions
- Film & book catalogs
- Campus displays
- Earth Day Projects

Greening Our Campuses Project Team

- Energy audit & carbon footprint guides
- Encourage progress toward IPCC goals
- Document best practices
- Learn about electrification
- Landscaping & arboretums examples
- Highlight sustainable campus projects

SSAFE Mission Statement

We seek

- to unite the 4,000+ residents at Kendal affiliates in addressing the greatest challenge facing our planet: climate change
- to mitigate the effects of global warming by drawing on our combined experience, knowledge, resources, and talents
- to share our methods with the Kendal Corporation, Kendal affiliate staff and administrators, as well as other retirement communities.

Supporting SSAFE's Mission

SSAFE's mission is accomplished through volunteer efforts and professional assistance. Consider making a donation to support SSAFE by sending a check to:

Scot Drysdale, SSAFE Treasurer
32 Penn Road, Apt. 419
Hanover, NH 03755

SSAFE uses these funds to support efforts such as guiding senior living campuses to net-zero emissions, climate advocacy, and climate education. Senior Stewards Acting for the Environment (SSAFE) is a 501(c)(3) nonprofit corporation. EIN: 87-1229514.

Interested in learning more? Visit SSAFE.org online or email us at info@ssafe.org